

Please check the examination details below before entering your candidate information

Candidate surname					Other names				
Centre Number					Candidate Number				

Pearson Edexcel Level 1/Level 2 GCSE (9–1)

Time 1 hour 30 minutes

Paper
reference**1MA1/3H**

Mathematics

PAPER 3 (Calculator)

Higher Tier

You must have: Ruler graduated in centimetres and millimetres, protractor, pair of compasses, pen, HB pencil, eraser, calculator. Tracing paper may be used.

Total Marks

Instructions

- Use **black** ink or ball-point pen.
- **Fill in the boxes** at the top of this page with your name, centre number and candidate number.
- Answer **all** questions.
- Answer the questions in the spaces provided – *there may be more space than you need.*
- You must **show all your working**.
- Diagrams are **NOT** accurately drawn, unless otherwise indicated.
- **Calculators may be used.**
- If your calculator does not have a π button, take the value of π to be 3.142 unless the question instructs otherwise.



Information

- The total mark for this paper is 80
- The marks for **each** question are shown in brackets – *use this as a guide as to how much time to spend on each question.*

Advice

- Read each question carefully before you start to answer it.
- Try to answer every question.
- Check your answers if you have time at the end.

Turn over ►

P64634A

©2021 Pearson Education Ltd.

E:1/1/1/1/1/1/1/



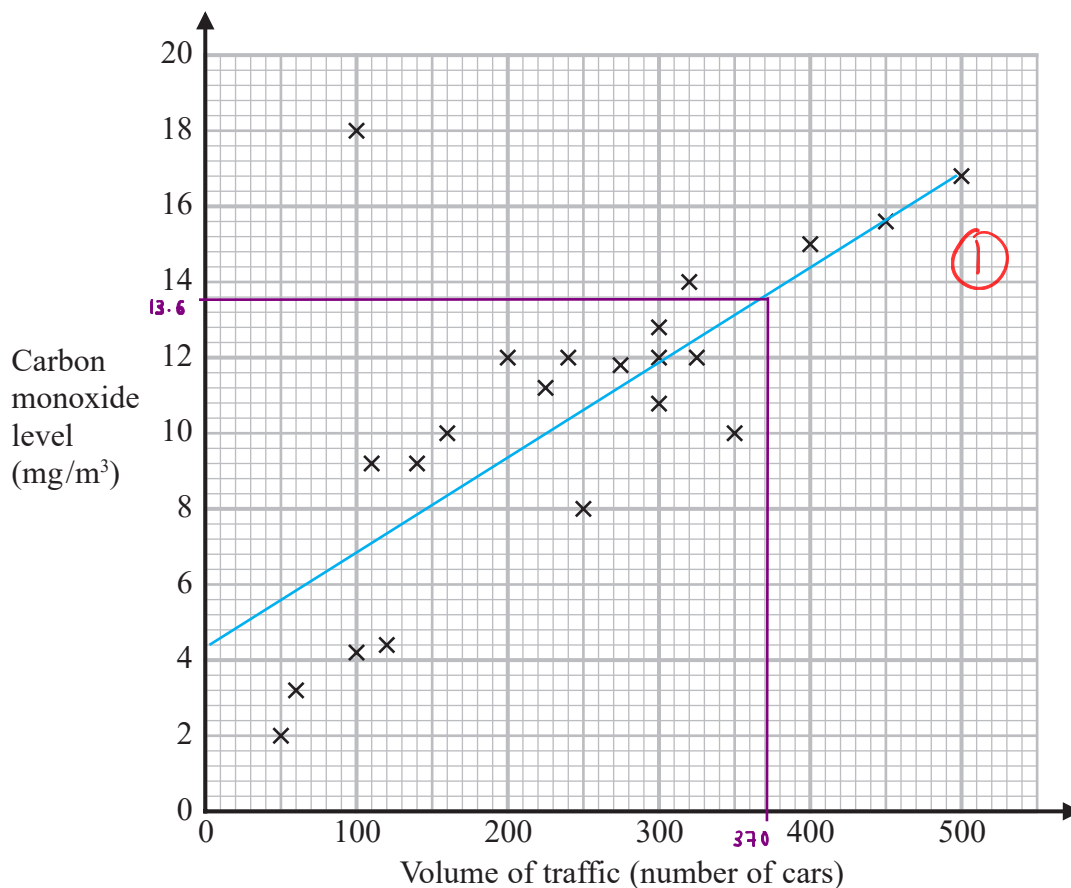
Pearson

Answer ALL questions.

Write your answers in the spaces provided.

You must write down all the stages in your working.

- 1 The scatter graph shows information about the volume of traffic and the carbon monoxide level at a point on a road each day for 22 days.



One point is an outlier.

- (a) Write down the coordinates of this point.

Outlier = a point that lies outside the overall pattern in a set of data.

(1)
(..... 100, 18)
(1)

For another day, 370 cars pass the point on the road.

- (b) Estimate the carbon monoxide level for this day.

(1)
..... 13.6 mg/m³
(2)



DO NOT WRITE IN THIS AREA

DO NOT WRITE IN THIS AREA

DO NOT WRITE IN THIS AREA

Alfie says,

“Because there is an outlier, there is no correlation.”

(c) Is Alfie correct?

You must give a reason for your answer.

No, because we can ignore the outlier.

(1)

(1)

(Total for Question 1 is 4 marks)

DO NOT WRITE IN THIS AREA

DO NOT WRITE IN THIS AREA

DO NOT WRITE IN THIS AREA



P 6 4 6 3 4 A 0 3 2 4

2 Natalie makes potato cakes in a restaurant.

She mixes potato, cheese and onion so that

$$\text{weight of potato} : \text{weight of cheese} : \text{weight of onion} = 9:2:1$$

Natalie needs to make 6000 g of potato cakes.

Cheese costs £2.25 for 175 g.

Work out the cost of the cheese needed to make 6000 g of potato cakes.

Amount of cheese needed for 6000 g of potato cakes:

$$p : c : o \\ = 9 : 2 : 1 \rightarrow \text{total 12 parts. } \textcircled{1}$$

$$\begin{array}{l} 12 \text{ parts} = 6000 \text{ g} \\ \div 12 \quad \swarrow \quad \searrow \quad \div 12 \\ 1 \text{ part} = 500 \text{ g.} \end{array}$$

cheese has 2 parts \therefore amount of cheese needed

$$= 2 \times 500 \text{ g} = 1000 \text{ g. } \textcircled{1}$$

Cost of 1000 g of cheese:

$$\begin{array}{l} 175 \text{ g} = \text{£} 2.25 \\ \times \frac{1000}{175} \quad \swarrow \quad \searrow \quad \times \frac{1000}{175} \\ 1000 \text{ g} = \text{£} 12.86 \end{array} \textcircled{1}$$

$\textcircled{1}$

£ 12.86

(Total for Question 2 is 4 marks)



- 3 (a) Write 4.5×10^5 as an ordinary number.

$$4.5 \times 100,000$$

$$\begin{array}{r} \textcircled{1} \quad 450\,000 \\ \hline \end{array} \quad (1)$$

- (b) Write 0.007 in standard form.

$$7 \div 1000 \quad \rightarrow \quad \div 1000 \text{ can be written as } \times 10^{-3}.$$

$$\begin{array}{r} \textcircled{1} \quad 7 \times 10^{-3} \\ \hline \end{array} \quad (1)$$

- (c) Work out $4.2 \times 10^3 + 5.3 \times 10^2$
Give your answer in standard form.

$$\begin{aligned} & 4.2 \times 10^3 + 5.3 \times 10^2 \\ = & 4.2 \times 10^3 + 0.53 \times 10^3 \\ = & \underline{\underline{4.73 \times 10^3}} \quad \textcircled{1} \end{aligned}$$

$$\begin{array}{r} \textcircled{1} \quad 4.73 \times 10^3 \\ \hline \end{array} \quad (2)$$

(Total for Question 3 is 4 marks)

DO NOT WRITE IN THIS AREA

DO NOT WRITE IN THIS AREA

DO NOT WRITE IN THIS AREA



4 A water tank is empty.
Anil needs to fill the tank with 2400 litres of water.

Company A supplies water at a rate of 8 litres in 1 minute 40 seconds.
Company B supplies water at a rate of 2.2 gallons per minute.

1 gallon = 4.54 litres

Company A would take more time to fill the tank than Company B would take to fill the tank.

How much more time?

Give your answer in minutes correct to the nearest minute.

COMPANY A	COMPANY B.
<p>1 min 40 seconds</p> <p>= $1 + \left(\frac{40}{60}\right)$ minutes ①</p> <p style="color: blue;">↙ because there are 60 seconds in 1 minute.</p> <p>= $\frac{5}{3}$ mins.</p> <p>$\times 300$ ↙ $8\text{ l} = \frac{5}{3}$ mins. $\times 300$ ↘ ①</p> <p>$2400\text{ l} = \underline{500\text{ mins.}}$ ①</p> <p>Company A takes 500 mins</p>	<p>$\times 2.2$ ↙ 1 gallon = 4.54 l $\times 2.2$ ↘</p> <p>2.2 gallons = 9.988 l</p> <p>$\times \frac{2400}{9.988}$ ↙ $9.988\text{ l} = 1\text{ min}$ $\times \frac{2400}{9.988}$ ↘</p> <p>$2400\text{ l} \approx \underline{240\text{ mins}}$</p> <p>Company B takes $\approx 240\text{ mins}$ ①</p> <p>①</p> <p style="text-align: right;">260 minutes</p>

$500 - 240 = 260$

(Total for Question 4 is 4 marks)

\therefore A takes 260 mins longer than B.

DO NOT WRITE IN THIS AREA

DO NOT WRITE IN THIS AREA

DO NOT WRITE IN THIS AREA



5 The first four terms of a Fibonacci sequence are

$$a \quad 2a \quad 3a \quad 5a$$

The sum of the first five terms of this sequence is 228

Work out the value of a .

A Fibonacci sequence is one where each number in the sequence is the sum of the two numbers that come before it.

1	2	3	4	5	
a	$2a$	$3a$	$5a$	$8a$	①

The 5th term must be equal to the 3rd term + the 4th term

$$\therefore 5^{\text{th}} \text{ term} = 3a + 5a = 8a.$$

①

$$\text{SUM OF FIRST FIVE TERMS} = a + 2a + 3a + 5a + 8a = 228.$$

$$\begin{array}{r} 19a = 228 \\ \div 19 \quad \downarrow \quad \quad \quad \downarrow \quad \div 19 \\ \underline{\underline{a = 12.}} \end{array}$$

①

$$a = 12$$

(Total for Question 5 is 3 marks)

DO NOT WRITE IN THIS AREA

DO NOT WRITE IN THIS AREA

DO NOT WRITE IN THIS AREA



- 6 In a bag there are only red counters, blue counters, green counters and pink counters. A counter is going to be taken at random from the bag.

The table shows the probabilities of taking a red counter or a blue counter.

Colour	red	blue	green	pink
Probability	0.05	0.15	0.5 (1)	0.3 (1)

The probability of taking a green counter is 0.2 more than the probability of taking a pink counter.

- (a) Complete the table. *All of the probabilities add up to 1.*

$$P(G) + P(P) = 1 - (0.05 + 0.15) = 1 - 0.2 = 0.8$$

if $P(P) = x$, then $P(G) = x + 0.2$.

$$\therefore x + 0.2 + x = 0.8 \rightarrow 2x + 0.2 = 0.8 \rightarrow x = 0.3$$

$$\therefore P(P) = 0.3 \text{ and } P(G) = 0.5 \quad (2)$$

There are 18 blue counters in the bag.

- (b) Work out the total number of counters in the bag.

$$15\% = 18 \rightarrow \text{we want to find } 100\%$$

$$\begin{array}{l} \div 15 \left\{ \begin{array}{l} 15\% = 18 \\ 1\% = 1.2 \end{array} \right. \div 15 \quad (1) \\ \times 100 \left\{ \begin{array}{l} 100\% = 120 \end{array} \right. \times 100 \end{array}$$

$$\begin{array}{r} (1) \\ \hline 120 \\ (2) \end{array}$$

(Total for Question 6 is 4 marks)

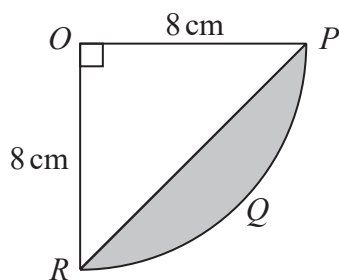
DO NOT WRITE IN THIS AREA

DO NOT WRITE IN THIS AREA

DO NOT WRITE IN THIS AREA



- 7 The diagram shows a sector $OPQR$ of a circle, centre O and radius 8 cm.



OPR is a triangle.

Work out the area of the shaded segment PQR .

Give your answer correct to 3 significant figures.

Shaded area = Area of sector - Area of triangle.

$$\begin{aligned} \text{Area of sector} &= \frac{\theta}{360} (\pi r^2) \\ &= \frac{90}{360} (\pi)(8^2) = 16\pi. \end{aligned} \quad (1)$$

$$\text{Area of triangle} = \frac{\text{base} \times \text{height}}{2} = \frac{8 \times 8}{2} = 32. \quad (1)$$

$$PQR = (16\pi) - 32 = 18.26548\dots$$

$$(1) \quad \approx \underline{\underline{18.3 \text{ cm}^2}} \quad (3 \text{ s.f.}) \quad (1)$$

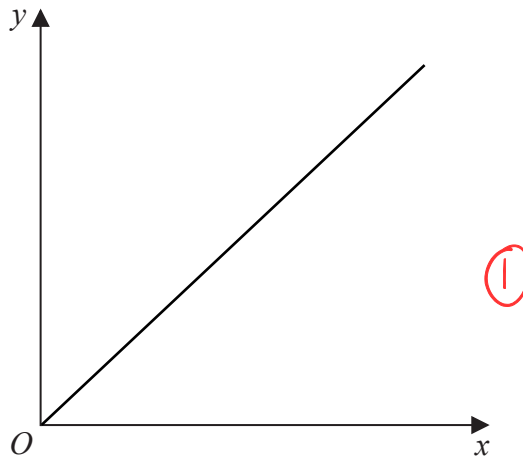
..... 18.3 cm^2

(Total for Question 7 is 4 marks)



8 (a) Using the axes below, sketch a graph to represent the statement

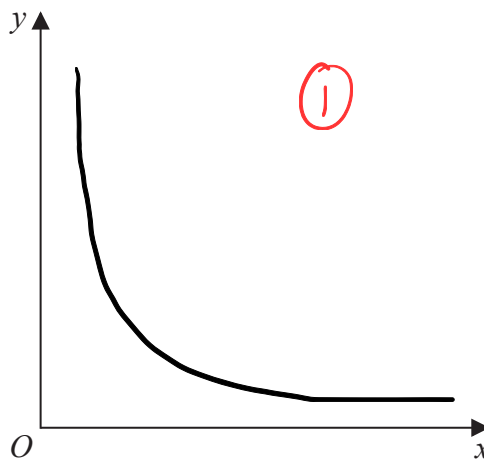
y is directly proportional to x $\rightarrow y = kx$



(1)

(b) Using the axes below, sketch a graph to represent the statement

y is inversely proportional to x $\rightarrow y = \frac{k}{x}$



(1)

(Total for Question 8 is 2 marks)

DO NOT WRITE IN THIS AREA

DO NOT WRITE IN THIS AREA

DO NOT WRITE IN THIS AREA



- 9 On Monday, 12 people took 5 hours to clean a number of cars.
On Tuesday, 15 people cleaned the same number of cars.

Assuming that all the people worked at the same rate,

- (a) work out how many hours the 15 people took to clean the cars.

more people cleaning = less time taken.

$12 \text{ people} = 5 \text{ hours.}$
 If we divide on the LHS $\div 12$ \rightarrow $1 \text{ person} = 60 \text{ hours.}$ $\times 12$ we multiply on the RHS.
 $\textcircled{1}$ $\times 15$ \rightarrow $15 \text{ people} = 4 \text{ hours.}$ $\div 15$
 $\textcircled{1}$ 4 hours
(2)

The assumption is wrong.

- (b) How might this affect the time taken for the 15 people to clean the cars?

It could take more or less time. $\textcircled{1}$

(1)

(Total for Question 9 is 3 marks)

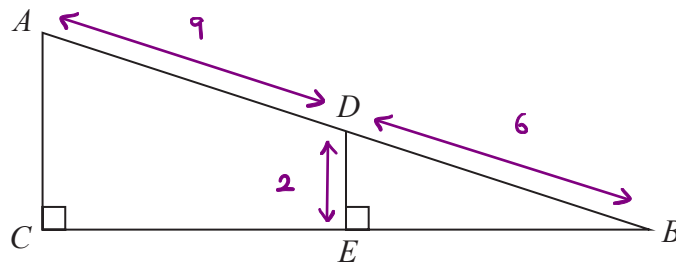
DO NOT WRITE IN THIS AREA

DO NOT WRITE IN THIS AREA

DO NOT WRITE IN THIS AREA



10 The diagram shows two right-angled triangles ACB and DEB .



- $AD = 9$ cm
- $DE = 2$ cm
- $DB = 6$ cm

Calculate the length of CB .
Give your answer correct to 2 decimal places.

The two triangles are similar.

we need to find the scale factor.

$6 \times SF = 15.$
 $SF = \frac{15}{6} = 2.5$

$a^2 + b^2 = c^2.$
 $2^2 + BE^2 = 6^2.$
 $BE = \sqrt{6^2 - 2^2} = \sqrt{32}$

14.14 cm

If $BE = \sqrt{32}$ cm and the scale factor = 2.5,

$CB = \sqrt{32} \times 2.5 = \underline{\underline{14.14}} \text{ cm (2dp.)}$

(Total for Question 10 is 4 marks)



DO NOT WRITE IN THIS AREA

DO NOT WRITE IN THIS AREA

DO NOT WRITE IN THIS AREA

11 Freya writes down the value of x , correct to 1 decimal place.

She writes $x = 6.4$

Complete the error interval for x .

units . tenths

0 0 0 0 6 . 4 0 0 0 0

↘ 1 decimal place = 1 tenth = 0.1.

$$\text{Error interval} = \frac{1}{2}(0.1) = 0.05.$$

$$6.4 - 0.05 = 6.35$$

$$6.4 + 0.05 = 6.45$$

①

①

6.35

 $\leq x <$

6.45

(Total for Question 11 is 2 marks)

DO NOT WRITE IN THIS AREA

DO NOT WRITE IN THIS AREA

DO NOT WRITE IN THIS AREA



DO NOT WRITE IN THIS AREA

DO NOT WRITE IN THIS AREA

DO NOT WRITE IN THIS AREA

$$(x^a)^b = x^{ab}$$

$$(xy)^a = x^a y^a$$

12 $(ax^6)^{\frac{1}{n}} = 7x^3$

Work out the value of a and the value of n .

$$(ax^6)^{\frac{1}{n}} = 7x^3$$

$$a^{\frac{1}{n}} (x^6)^{\frac{1}{n}} = 7x^3$$

$$a^{\frac{1}{n}} x^{\frac{6}{n}} = 7x^3$$

$$a^{\frac{1}{n}} = 7 \quad x^{\frac{6}{n}} = x^3$$

$$\textcircled{1} \quad x^{\frac{6}{n}} = x^3$$

$$\frac{6}{n} = 3$$

$$n = \frac{6}{3} = 2$$

$$\textcircled{2} \quad a^{\frac{1}{n}} = 7$$

We know that $n = 2$.

$$a^{\frac{1}{2}} = 7$$

$$\sqrt{a} = 7$$

$$a = 7^2 = 49$$

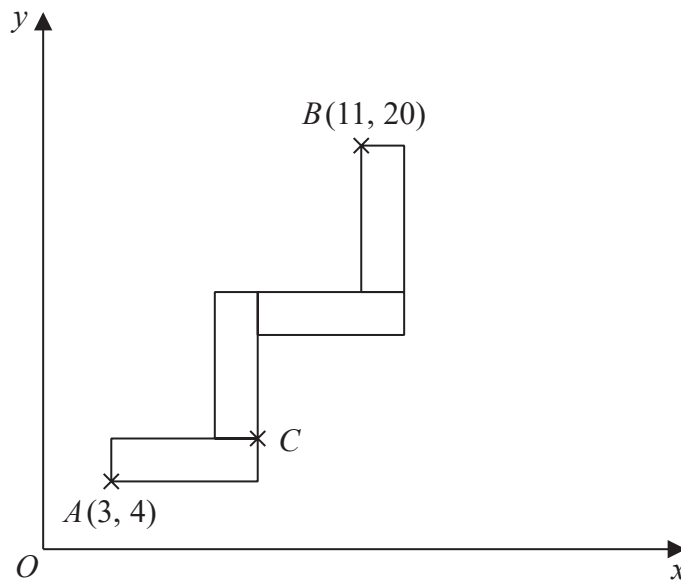
$a = 49$ ①

$n = 2$ ①

(Total for Question 12 is 2 marks)



- 13 A pattern is made from four identical rectangles. The sides of the rectangles are parallel to the axes.



Point A has coordinates (3, 4)
 Point B has coordinates (11, 20)
 Point C is marked on the diagram.

Work out the coordinates of C.
 You must show all your working.



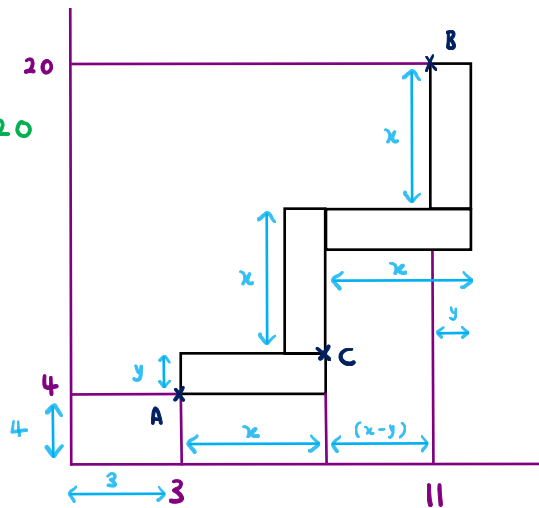
$$4 + y + x + x = 20$$

$$4 + y + 2x = 20$$

$$2x + y = 16.$$

$$2x = 16 - y.$$

①



$$3 + x + (x - y) = 11.$$

$$3 + 2x - y = 11.$$

$$2x - y = 8.$$

$$\textcircled{1} \quad 2x = 8 + y.$$

$$16 - y = 8 + y.$$

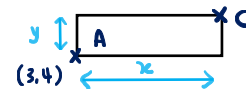
$$8 = 2y.$$

$$y = 4. \quad \textcircled{1}$$

$$2x = 8 + y$$

$$2x = 8 + 4 = 12.$$

$$x = 6.$$



$$C = ((3+x), (4+y))$$

$$= \underline{\underline{(9, 8)}}$$

①

①

(9 , 8)

(Total for Question 13 is 5 marks)

DO NOT WRITE IN THIS AREA

DO NOT WRITE IN THIS AREA

DO NOT WRITE IN THIS AREA



14 Olivia and Jessica have in total half as many sweets as Fran and Gary have in total.

Fran and Gary share their sweets in the ratio 2:3

Olivia and Jessica share their sweets in the ratio 9:1

Fran got w sweets.

Gary got x sweets.

Olivia got y sweets.

Jessica got z sweets.

Find, in its simplest form, $w:x:y:z$

Let's say Olivia and Jessica have 50 sweets.

Then Fran and Gary have 100 sweets. (1)

F:G = 2:3 → 5 parts for 100 sweets.

∴ 1 part = 20 sweets.

F:G = 2:3 = 40:60.

O:J = 9:1 → 10 parts for 50 sweets. (1)

∴ 1 part = 5 sweets.

O:J = 9:1 = 45:5.

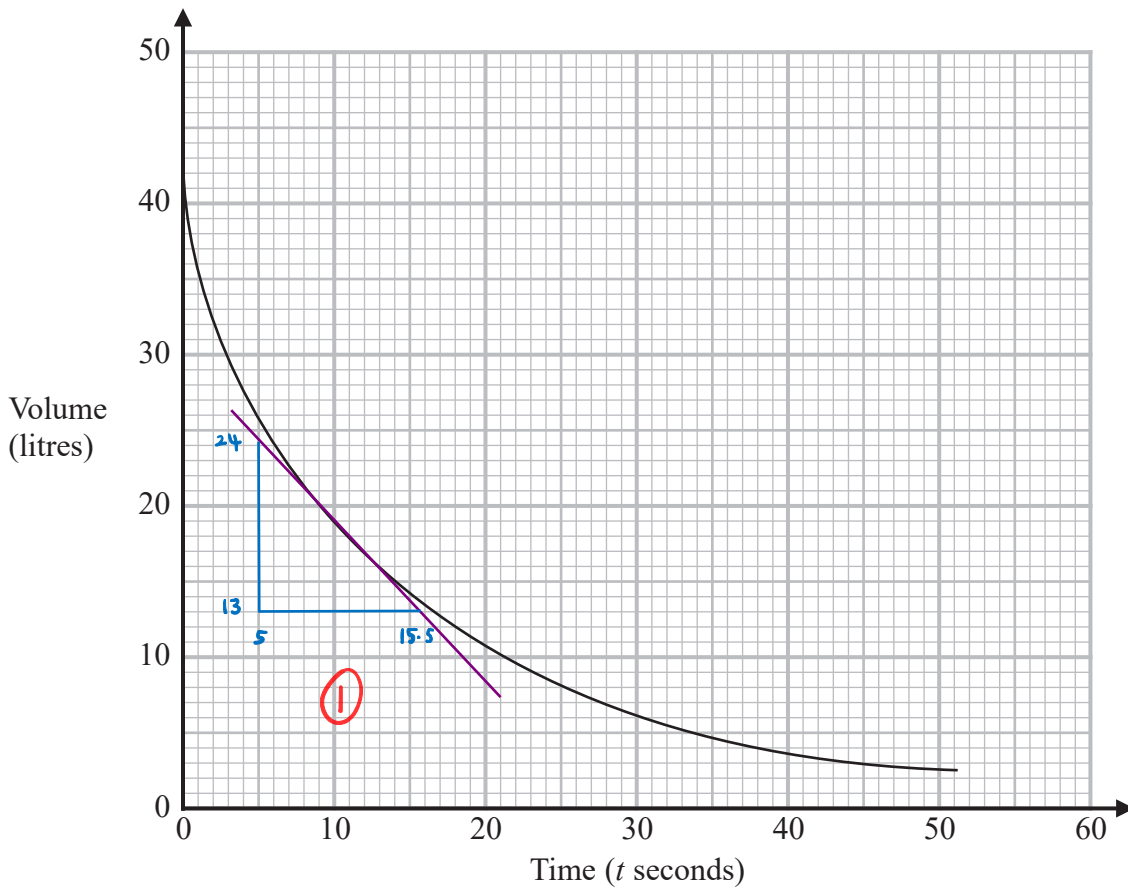
$$\begin{aligned}
 & w : x : y : z \\
 = & F : G : O : J \quad (1) \\
 = & 40 : 60 : 45 : 5 \\
 = & \underline{\underline{8 : 12 : 9 : 1}} \quad (1)
 \end{aligned}$$

8 : 12 : 9 : 1

(Total for Question 14 is 4 marks)



15 The graph gives the volume of water, in litres, in a container at time t seconds after the water started to flow out of the container.



Using the graph, work out an estimate for the rate at which the water is flowing out of the container when $t = 12$.
You must show your working.

gradient!

When we need to find the gradient of a curve, we have to draw a tangent at a specific point.

↳ in our case, this is at $t = 12$.

Gradient of tangent = $\frac{\text{change in } y}{\text{change in } x}$

1.0 litres per second

$\frac{24 - 13}{15.5 - 5} = 1.047... \approx \underline{\underline{1.0}}$

(Total for Question 15 is 3 marks)

DO NOT WRITE IN THIS AREA

DO NOT WRITE IN THIS AREA

DO NOT WRITE IN THIS AREA



16 The curve C has equation $y = x^2 + 3x - 3$

The line L has equation $y - 5x + 4 = 0$

Show, algebraically, that C and L have exactly one point in common.

If C and L have one point (x, y) in common, they have the same x -value and the same y -value.

$$\left. \begin{array}{l} \textcircled{C} \quad y = x^2 + 3x - 3. \\ \textcircled{L} \quad y - 5x + 4 = 0 \quad \therefore \quad y = 5x - 4. \end{array} \right\} \therefore x^2 + 3x - 3 = 5x - 4.$$

$$x^2 + 3x - 3 = 5x - 4.$$

$$x^2 - 2x - 3 = -4.$$

$$x^2 - 2x + 1 = 0.$$

$$\downarrow$$

$$x^2 - 2x + 1 = 0.$$

$$(x-1)^2 = 0.$$

$$\therefore x = 1.$$

there is only one value of x and so C and L have only one point in common.

(Total for Question 16 is 4 marks)



- 17 x is directly proportional to the square of y .
 y is directly proportional to the cube of z .

$$z = 2 \text{ when } x = 32$$

Find a formula for x in terms of z .

$$x = ay^2$$

$$y = bz^3 \Rightarrow \therefore y^2 = (bz^3)^2 = b^2(z^3)^2 = b^2z^6$$

$$\text{If } x = ay^2 \text{ and } y^2 = b^2z^6 \text{ then:}$$

$$\hookrightarrow x = ab^2z^6$$

$$\text{When } x = 32, z = 2$$

$$x = ab^2z^6 \Rightarrow 32 = ab^2(2)^6$$

ab^2 is just a constant!

$$\begin{array}{l} 32 = ab^2(64) \\ \div 64 \quad \left. \begin{array}{l} \\ \frac{1}{2} = ab^2 \end{array} \right\} \div 64 \end{array}$$

$$\text{we saw that } x = ab^2z^6$$

$$\hookrightarrow \text{and we now know that } ab^2 = \frac{1}{2}$$

$$\therefore x = \frac{1}{2}z^6$$

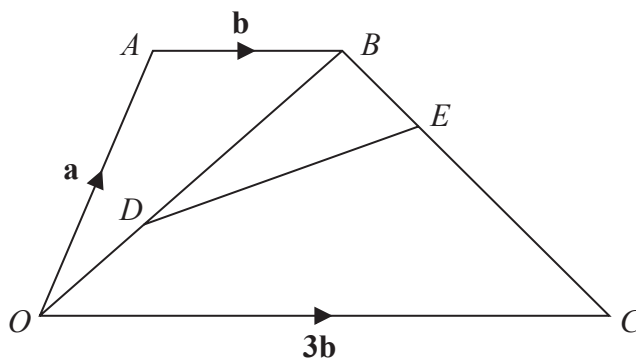
=====

$$x = \frac{1}{2}z^6$$

(Total for Question 17 is 4 marks)



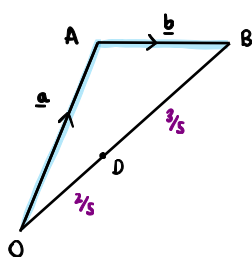
18 $OABC$ is a trapezium.



$$\begin{aligned} \vec{OA} &= \mathbf{a} \\ \vec{AB} &= \mathbf{b} \\ \vec{OC} &= 3\mathbf{b} \end{aligned}$$

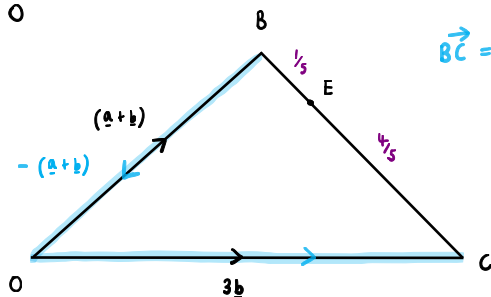
D is the point on OB such that $OD:DB = 2:3$
 E is the point on BC such that $BE:EC = 1:4$

Work out the vector \vec{DE} in terms of \mathbf{a} and \mathbf{b} .
 Give your answer in its simplest form.



$$\vec{OB} = \vec{OA} + \vec{AB} = \mathbf{a} + \mathbf{b} \quad \textcircled{1}$$

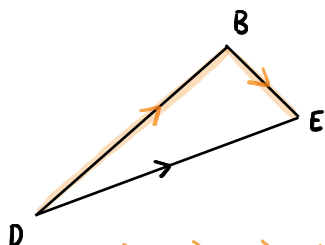
$OD:DB = 2:3$ total 5 parts.



$$\begin{aligned} \vec{BC} &= \vec{BO} + \vec{OC} = -(\mathbf{a} + \mathbf{b}) + 3\mathbf{b} \\ &= -\mathbf{a} - \mathbf{b} + 3\mathbf{b} = -\mathbf{a} + 2\mathbf{b} \end{aligned}$$

$BE:EC = 1:4$ total 5 parts $\textcircled{1}$

NOTE: $\vec{BO} = -(\vec{OB})!$



$$\vec{DB} = \frac{3}{5} (\vec{OB}) = \frac{3}{5} (\mathbf{a} + \mathbf{b}) = \frac{3}{5} \mathbf{a} + \frac{3}{5} \mathbf{b}$$

$$\vec{BE} = \frac{1}{5} (\vec{BC}) = \frac{1}{5} (-\mathbf{a} + 2\mathbf{b}) = -\frac{1}{5} \mathbf{a} + \frac{2}{5} \mathbf{b} \quad \textcircled{1}$$

$$\vec{DE} = \vec{DB} + \vec{BE} = \left(\frac{3}{5} \mathbf{a} + \frac{3}{5} \mathbf{b} \right) + \left(-\frac{1}{5} \mathbf{a} + \frac{2}{5} \mathbf{b} \right) \quad \textcircled{1}$$

$$= \underline{\underline{\frac{2}{5} \mathbf{a} + \mathbf{b}}}}$$

$$\frac{2}{5} \mathbf{a} + \mathbf{b}$$

(Total for Question 18 is 4 marks)

DO NOT WRITE IN THIS AREA

DO NOT WRITE IN THIS AREA

DO NOT WRITE IN THIS AREA



19 At the start of year n , the number of animals in a population is P_n

At the start of the following year, the number of animals in the population is P_{n+1} where

$$P_{n+1} = kP_n$$

At the start of 2017 the number of animals in the population was 4000

At the start of 2019 the number of animals in the population was 3610

Find the value of the constant k .

$$P_{n+1} = kP_n$$

2017 - 2018:

$$P_{2018} = kP_{2017}$$

$$P_{2018} = k(4000)$$

2018 - 2019:

$$P_{2019} = kP_{2018}$$

$$3610 = kP_{2018}$$

$$P_{2018} = \frac{3610}{k}$$

$$\therefore 4000k = \frac{3610}{k}$$

$$4000k^2 = 3610$$

$$k = \sqrt{\frac{3610}{4000}} = 0.95$$

0.95

(Total for Question 19 is 3 marks)

DO NOT WRITE IN THIS AREA

DO NOT WRITE IN THIS AREA

DO NOT WRITE IN THIS AREA



20 Pat throws a fair coin n times.

Find an expression, in terms of n , for the probability that Pat gets at least 1 head and at least 1 tail.

It is almost certain that Pat will get at least one head and one tail.

The **ONLY** time this is **NOT** possible is if there are **all** heads or **all** tails.

$$P(\text{all heads}) = \left(\frac{1}{2}\right)^n \quad P(\text{all tails}) = \left(\frac{1}{2}\right)^n$$

$$P(\text{all heads OR all tails}) = \left(\frac{1}{2}\right)^n + \left(\frac{1}{2}\right)^n$$

$$P(\text{at least one head and one tail}) \quad \textcircled{1}$$

$$= 1 - (\text{all heads or all tails})$$

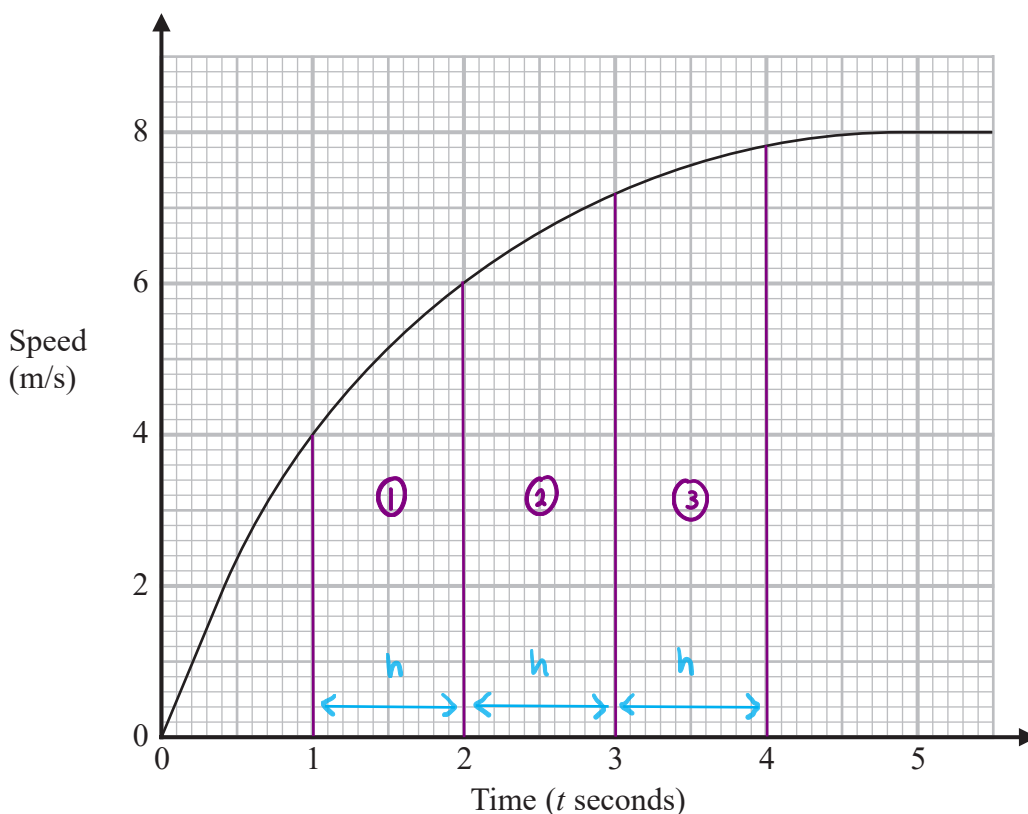
$$= 1 - \left(\left(\frac{1}{2}\right)^n + \left(\frac{1}{2}\right)^n \right)$$

$$= \underline{\underline{1 - \left(\frac{1}{2}\right)^n - \left(\frac{1}{2}\right)^n}} \quad \textcircled{1}$$

(Total for Question 20 is 2 marks)



21 Here is a speed-time graph showing the speed, in metres per second, of an object t seconds after it started to move from rest.



(a) Using 3 trapeziums of equal width, work out an estimate for the area under the graph between $t = 1$ and $t = 4$

Area of trapezium = $\left(\frac{a+b}{2}\right)h$.

① $A = \left(\frac{4+6}{2}\right) \times 1 = 5$.

② $A = \left(\frac{6+7.2}{2}\right) \times 1 = 6.6$.

③ $A = \left(\frac{7.2+7.8}{2}\right) \times 1 = 7.5$

Total area :
 $= 5 + 6.6 + 7.5$
 $= 19.1$

19.1

(3)

(b) What does this area represent?

Area = Speed \times time = distance.

(1)

(Total for Question 21 is 4 marks)

DO NOT WRITE IN THIS AREA

DO NOT WRITE IN THIS AREA

DO NOT WRITE IN THIS AREA



22 Show that $\frac{6x^3}{(9x^2 - 144)} \div \frac{2x^4}{3(x-4)}$ can be written in the form $\frac{1}{x(x+r)}$ where r is an integer.

$$\frac{6x^3}{(9x^2 - 144)} \div \frac{2x^4}{3(x-4)} = \frac{6x^3}{(9x^2 - 144)} \times \frac{3(x-4)}{2x^4}$$

$$= \frac{6x^3 (3(x-4))}{(9x^2 - 144) 2x^4}$$

$$= \frac{\cancel{6}x^3 (\cancel{3}x - 12)}{(\cancel{3}x - 12)(\cancel{3}x + 12) \cancel{2}x^4}$$

$$= \frac{3}{x(3x+12)}$$

$$= \frac{\cancel{3}}{(x)\cancel{3}(x+4)}$$

$$= \frac{1}{x(x+4)}$$

(Total for Question 22 is 3 marks)

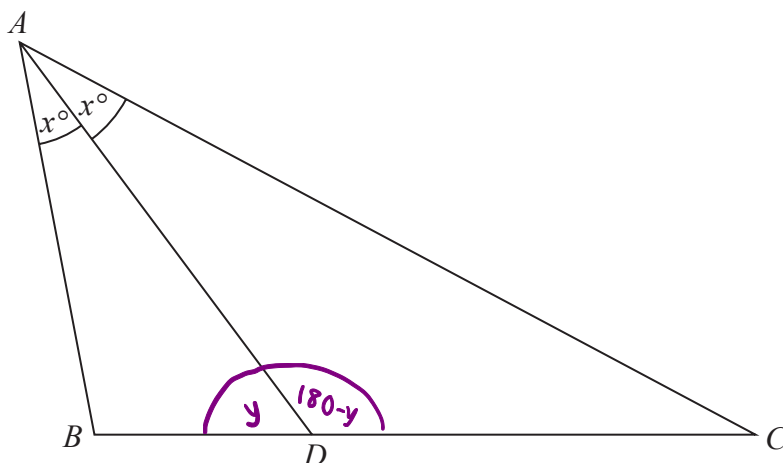
DO NOT WRITE IN THIS AREA

DO NOT WRITE IN THIS AREA

DO NOT WRITE IN THIS AREA



23 ABC is a triangle.



D is the point on BC such that $\text{angle } BAD = \text{angle } DAC = x^\circ$

Prove that $\frac{AB}{BD} = \frac{AC}{DC}$

Sine rule for $\triangle ABD$.

$$\frac{\sin x}{BD} = \frac{\sin ADB}{AB} \quad (1)$$

$$AB \sin x = BD \sin ADB.$$

$$\frac{AB}{BD} = \frac{\sin ADB}{\sin x}$$

Let $\hat{A}DB = y$:

$$\frac{AB}{BD} = \frac{\sin y}{\sin x}.$$

Sine rule for $\triangle ACD$

$$\frac{\sin x}{DC} = \frac{\sin ADC}{AC}$$

$$AC \sin x = DC \sin ADC.$$

$$\frac{AC}{DC} = \frac{\sin ADC}{\sin x} \quad (1)$$

$$\hat{A}DC = 180 - \hat{A}DB = (180 - y).$$

$$\therefore \frac{AC}{DC} = \frac{\sin(180 - y)}{\sin x}$$

$$\sin y = \sin(180 - y) ! \quad (1)$$

$$\frac{AB}{BD} = \frac{\sin y}{\sin x} \quad \text{and} \quad \frac{AC}{DC} = \frac{\sin y}{\sin x}$$

$$\therefore \frac{AB}{BD} = \frac{AC}{DC} \quad (1)$$

(Total for Question 23 is 4 marks)

TOTAL FOR PAPER IS 80 MARKS